



# GAT MONTHLY MEMBERSHIP PROGRESS REPORT

Results as of: 12/31/2022

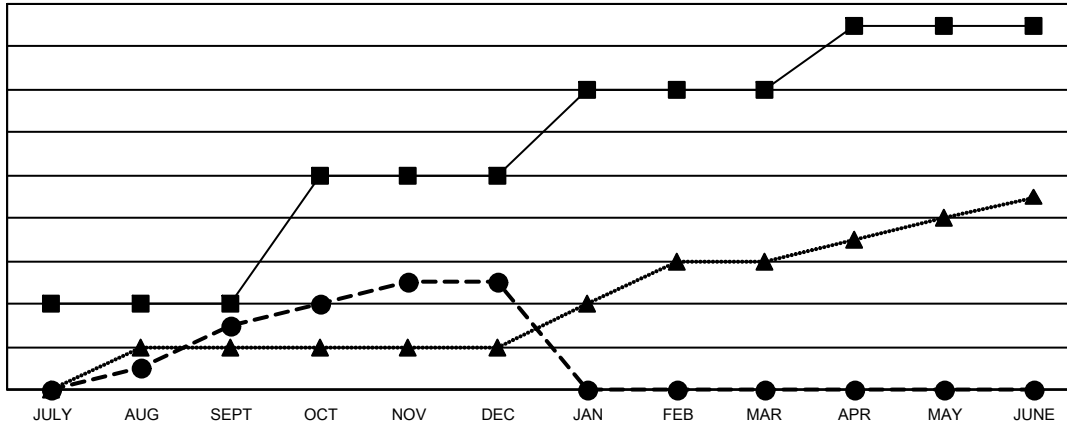
Multiple District 35

LOCATION: FLORIDA

| Clubs                 |               |           |               |
|-----------------------|---------------|-----------|---------------|
| RESULTS FOR 2022-2023 |               |           |               |
| QUARTER               | NEW CLUB GOAL | NEW CLUBS | DROPPED CLUBS |
| JULY/AUG/SEPT         | 4             | 3         | 3             |
| OCT/NOV/DEC           | 6             | 2         | 7             |
| JAN/FEB/MAR           | 4             | 0         | 0             |
| APR/MAY/JUNE          | 3             | 0         | 0             |

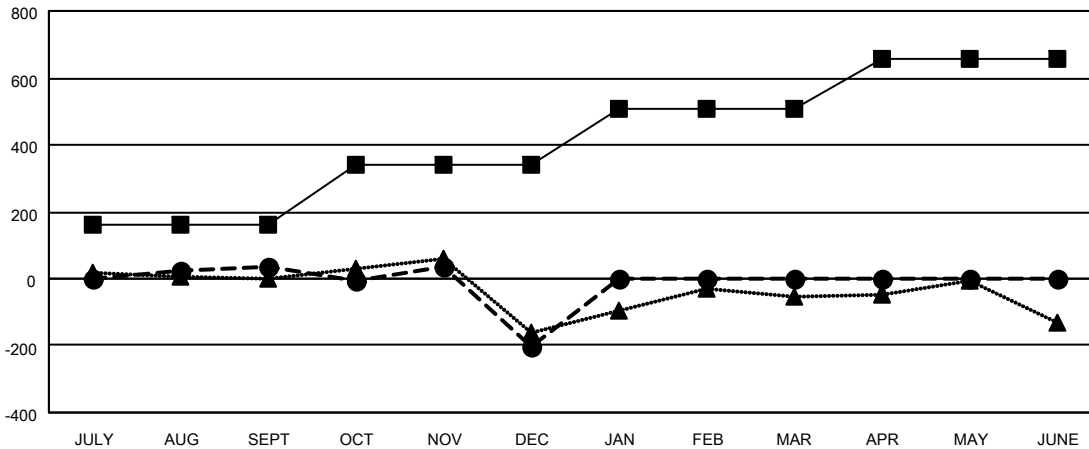
| Members               |                        |                      |  |
|-----------------------|------------------------|----------------------|--|
| RESULTS FOR 2022-2023 |                        |                      |  |
| QUARTER               | MEMBER GROWTH NET GOAL | MEMBER GROWTH ACTUAL | DROPPED MEMBERS ACTUAL (including transfers) |
| JULY/AUG/SEPT         | 160                    | 309                  | 221  |
| OCT/NOV/DEC           | 180                    | 223                  | 443  |
| JAN/FEB/MAR           | 170                    | 0                    | 0  |
| APR/MAY/JUNE          | 145                    | 0                    | 0  |

GOALS AND ACTUAL NEW CLUBS CUMULATIVE



- - CURRENT YEAR GOALS FOR NEW CLUBS
- - CURRENT YEAR ACTUAL NEW CLUBS
- ▲ - LAST YEAR ACTUAL NEW CLUBS

GOALS AND ACTUAL MEMBERS CUMULATIVE



- - MEMBER GROWTH NET GOAL
- - MEMBER GROWTH ACTUAL
- ▲ - LAST YEAR MEMBERSHIP ACTUAL

|                        |            |
|------------------------|------------|
| DROPPED CLUBS: 10      |            |
| <b>DROPPED MEMBERS</b> |            |
| DECEASED               | 46         |
| CLUB CANCELLED         | 66         |
| OTHER                  | 552        |
| <b>TOTAL</b>           | <b>664</b> |

97 CLUBS OF 220 ADDED 1 OR MORE NEW MEMBERS

[CLICK HERE FOR CUMULATIVE MEMBERSHIP DATA](#)

| GENDER DISTRIBUTION              |                |
|----------------------------------|----------------|
| MALE                             | 2,477 (51.64%) |
| FEMALE                           | 2,318 (48.32%) |
| NON BINARY                       | 1 (0.02%)      |
| PREFER NOT TO ANSWER             | 1 (0.02%)      |
| <b>TOTAL FAMILY UNIT MEMBERS</b> | <b>1,131</b>   |
| FAMILY MEMBERS PAYING HALF DUES  | 576            |